

Mappy Italia Spa  
Via Tevere 3  
Cesate MI  
ITALY

Eurofins Product Testing A/S  
Smedeskovvej 38  
8464 Galten  
Denmark

CustomerSupport@eurofins.com  
www.eurofins.com/VOC-testing

## VOC EMISSION TEST REPORT

### CDPH

29 June 2018

### 1 Sample Information

Sample name	SILSONIC
Batch no.	20518SILA
Production date	24/05/2018
Product type	Insulation panel
Sample reception	30/05/2018


### 2 Brief Evaluation of the Results

Regulation or protocol	Conclusion	Version of regulation or protocol
CDPH	Pass	CDPH/EHLB/Standard Method V1.2. (January 2017)

Full details based on the testing and direct comparison with limit values are available in the following pages



Thomas Bjerring  
Consultant



Rasmus Stengaard Christensen  
Analytical Service Manager, MSc in Chemistry

## Table of contents

<b>1</b>	<b>Sample Information</b>	<b>1</b>
<b>2</b>	<b>Brief Evaluation of the Results</b>	<b>1</b>
<b>3</b>	<b>Applied Test Methods</b>	<b>3</b>
3.1	General Test References	3
3.2	Specific Laboratory Sampling and Analyses	3
<b>4</b>	<b>Test Parameters, Sample Preparation and Deviations</b>	<b>4</b>
4.1	VOC Emission Chamber Test Parameters	4
4.2	Preparation of the Test Specimen	4
4.3	Picture of Sample	4
4.4	Deviations from Referenced Protocols and Regulations	4
<b>5</b>	<b>Results</b>	<b>5</b>
5.1	VOC Emission Test Results after 11 Days	5
5.2	VOC Emission Test Results after 12 Days	5
5.3	VOC Emission Test Results after 14 Days	5
<b>6</b>	<b>Summary and Evaluation of the Results</b>	<b>6</b>
6.1	Comparison with Limit Values of CDPH	6
<b>7</b>	<b>Appendices</b>	<b>7</b>
7.1	Chromatogram of VOC Emissions after 14 Days	7
7.2	Chain of Custody	8
7.3	How to Understand the Results	9
7.4	Description of VOC Emission Test	10
7.5	Quality Assurance	10
7.6	Accreditation	11
7.7	Uncertainty of the Test Method	11

### 3 Applied Test Methods

#### 3.1 General Test References

Regulation, protocol or standard	Version	Reporting limit VOC [ $\mu\text{g}/\text{m}^3$ ]	Calculation of TVOC	Combined uncertainty <sup>2</sup> [RSD(%)]
EN 16516	October 2017	5	Toluene equivalents	22%
ISO 16000 -3 -6 -9 -11	2006-2011 depending on part	2	Toluene equivalents	22%
ASTM D5116-10	2010	-	-	-
CDPH	CDPH/EHLB/Standard Method V1.2. (January 2017)	2	Toluene equivalents	22%

#### 3.2 Specific Laboratory Sampling and Analyses

Procedure	External Method	Internal SOP	Quantification limit / sampling volume	Analytical principle	Uncertainty <sup>2</sup> [RSD(%)]
Sample preparation	ISO 16000-11:2006, EN16402:2013, CDPH, AgBB/DIBt, EMICODE	71M549810	-	-	-
Emission chamber testing	ISO 16000-9:2006, EN 16516:2017	71M549811	-	Chamber and air control	-
Sampling of VOC	ISO 16000-6:2011, EN 16516:2017	71M549812	5 L	Tenax TA	-
Analysis of VOC	ISO 16000-6:2011, EN 16516:2017	71M542808B	1 $\mu\text{g}/\text{m}^3$	ATD-GC/MS	10%
Sampling of aldehydes	ISO 16000-3:2011, EN 16516:2017	71M549812	35 L	DNPH	-
Analysis of aldehydes	ISO 16000-3:2011, EN 717-1, EN 16516:2017	71M548400	3-6 $\mu\text{g}/\text{m}^3$	HPLC-UV	10%

The results are only valid for the tested sample(s).

This report may only be copied or reprinted in its entity, parts of it only with a written acceptance by Eurofins.

## 4 Test Parameters, Sample Preparation and Deviations

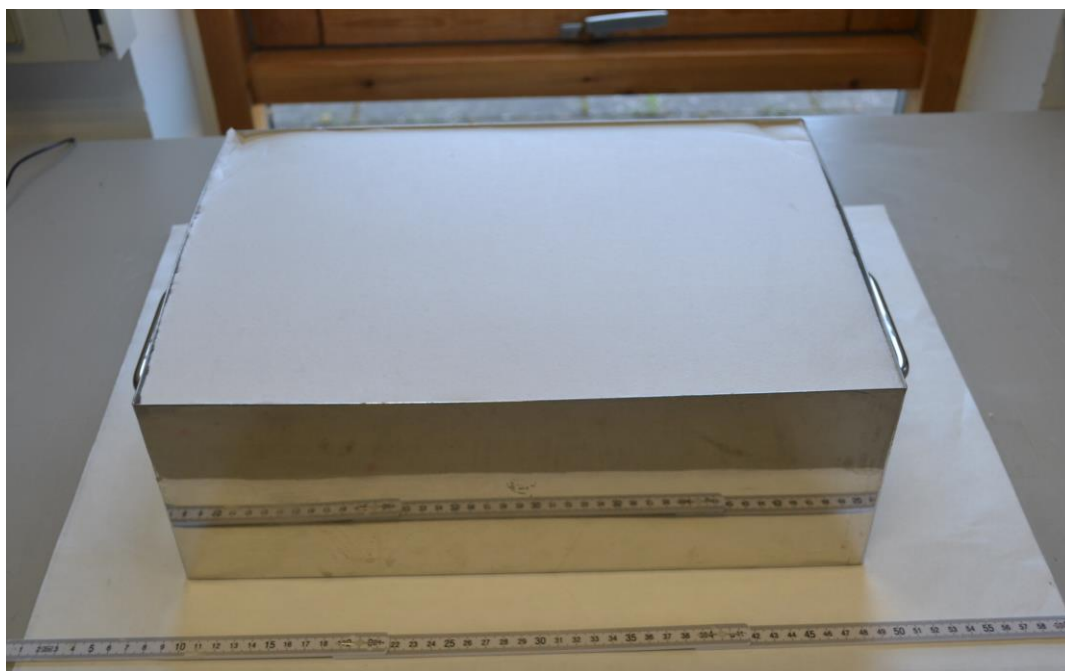
### 4.1 VOC Emission Chamber Test Parameters

Parameter	Value	Parameter	Value
Chamber volume, V[L]	119	Preconditioning period	-
Air Change rate, n[h <sup>-1</sup> ]	1	Test period	07/06/2018 - 21/06/2018
Relative humidity of supply air, RH [%]	50 ± 3	Area specific ventilation rate, q [m/h or m <sup>3</sup> /m <sup>2</sup> /h]	1
Temperature of supply air, T [°C]	23 ± 1	Loading factor [m <sup>2</sup> /m <sup>3</sup> ]	1
		Test scenario	Wall

### 4.2 Preparation of the Test Specimen

The specimen was placed into a stainless steel tray for covering of edges and back.

### 4.3 Picture of Sample



### 4.4 Deviations from Referenced Protocols and Regulations

No deviations from the referenced test methods were observed.

## 5 Results

### 5.1 VOC Emission Test Results after 11 Days

	CAS No.	Specific Conc. [µg/m <sup>3</sup> ]	Specific SER [µg/(m <sup>2</sup> ·h)]	Toluene eq. [µg/m <sup>3</sup> ]	Toluene SER [µg/(m <sup>2</sup> ·h)]
<b>TVOC (C5-C17)</b>				< 2	< 2
<b>Aldehydes</b>					
Formaldehyde	50-00-0	< 3	< 3		
Acetaldehyde	75-07-0	< 3	< 3		

### 5.2 VOC Emission Test Results after 12 Days

	CAS No.	Specific Conc. [µg/m <sup>3</sup> ]	Specific SER [µg/(m <sup>2</sup> ·h)]	Toluene eq. [µg/m <sup>3</sup> ]	Toluene SER [µg/(m <sup>2</sup> ·h)]
<b>TVOC (C5-C17)</b>				3.4	3.4
<b>Aldehydes</b>					
Formaldehyde	50-00-0	< 3	< 3		
Acetaldehyde	75-07-0	< 3	< 3		

### 5.3 VOC Emission Test Results after 14 Days

	CAS No.	Retention time [min]	ID-Cat	SER [µg/(m <sup>2</sup> ·h)]	Classroom Conc. [µg/m <sup>3</sup> ]	Office Conc. [µg/m <sup>3</sup> ]	½ CREL [µg/m <sup>3</sup> ]
<b>VOC (C5-C17)</b>							
n-Hexane	110-54-3	2.07	1	4.9	2.4	7.9	3500
<b>TVOC (C5-C17)</b>							
				2.4	1.2	3.9	
<b>Aldehydes</b>							
Formaldehyde	50-00-0		1	< 3	< 2	< 5	9
Acetaldehyde	75-07-0		1	< 3	< 2	< 5	70

## 6 Summary and Evaluation of the Results

### 6.1 Comparison with Limit Values of CDPH

Parameter	Test after 14 days			
	CAS No.  Single compounds	Concentration in Classroom [µg/m³]	Concentration in Office Room [µg/m³]	½ CREL [µg/m³]
<b>TVOC (C5-C17)</b>	-	1.2	3.9	-
<b>Single compounds</b> (with defined CREL values)				
n-Hexane	110-54-3	2.4	7.9	3500
<b>Formaldehyde</b>	50-00-0	< 2	< 5	≤ 9
<b>Acetaldehyde</b>	75-07-0	< 2	< 5	≤ 70

#### 6.1.1 Conversion of Emission Rates to CDPH Reference Room Concentrations

The CDPH method requires calculation of the measured emission rates into concentrations in given reference rooms. The equation and parameters figured below have been applied to calculate the concentrations in an office room or a classroom as required in the CDPH. The area used in the calculation varies depending on the expected usage of the product and therefore several entries can be found. Small and Very Small areas are not provided within the CDPH but are adapted from definitions given in EN 16516 and ISO 16000-9.

$$C_{\text{Calculated}} = \frac{SER_A \cdot A}{n \cdot V}$$

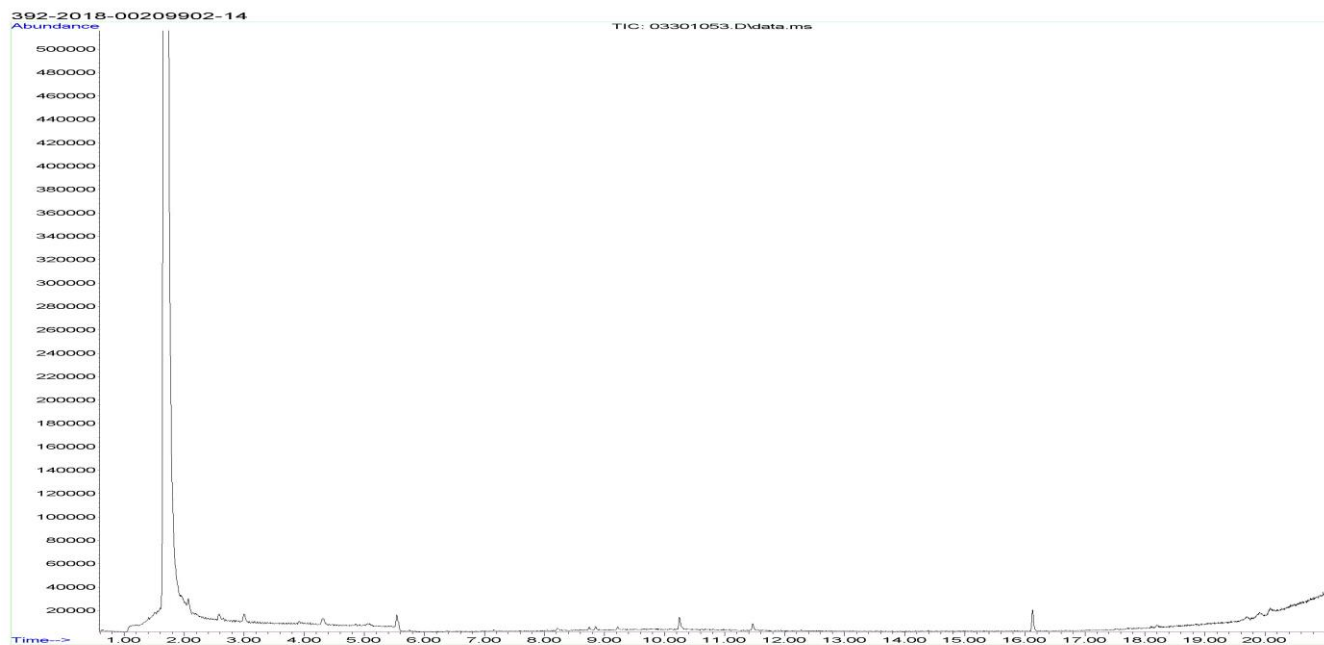
		Classroom parameters	Office Room parameters
SER	Area specific emission rate, µg/(m²h)	As tested	As tested
n	Air change, h <sup>-1</sup>	0.82	0.68
V	Volume of reference room, m³	231	30.6
A	Floor area, m²	89.2	11.1
	Walls area, m²	94.3	33.4
	Ceiling and Wall, m²	183.8	N/A
	Door and Millwork, m²	1.89	1.89
	Desk or Chair, units	27	1
	Very Small areas, m²	1.62	0.021
	Small areas, m²	11.55	1.53

The results are only valid for the tested sample(s).

This report may only be copied or reprinted in its entirety, parts of it only with a written acceptance by Eurofins.

## 7 Appendices

### 7.1 Chromatogram of VOC Emissions after 14 Days



## 7.2 Chain of Custody

Name of the product: SILSONIC		Type of product: INSULATION PANEL	
Model / Program / Series: SILSONIC		Batch N°.: 20518SILA	
Article N°.: PET5050B15101010/03 Misc.		Date of batch production: MAY 24 <sup>RD</sup> 2018	
Name of the manufacturer at the place of sampling (address / stamp): MAPPY ITALIA SPA		Manufacturer (if deviating from company's name at the place of sampling):	
Sample collector (Name, company, telephone): DAVIDE PIVATO - MAPPY ITALIA SPA - +390299431100		Signature of sample collector:	
Sample is taken from the ongoing production		Date of sampling: MAY 24 <sup>RD</sup> 2018	
Number of Samples 2		Time: 16:40	
Where had the product been stored prior to sampling?	<input type="checkbox"/> Production	How had the product been stored prior to sampling?	<input type="checkbox"/> open
	Place of storage: PRODUCTION PLANT		Packing material: AI + PE
Further links in chain of custody (Name, function, company, telephone) LUDMILA VIGO, R&D LABORATORY DIRECTOR, MAPPY ITALIA SPA, +300299431100		Signature <i>Ludmila Vigo</i>	
Further links in chain of custody (Name, function, company, telephone)		Signature	
Sample sender (Name, company, telephone): DAVIDE PIVATO- PRODUCTION MANAGER - MAPPY ITALIA SPA - +390299431100		Signature of sample sender: <i> Davide Pivato</i>	
Date and time of sending: MAY 25 <sup>RD</sup> 2018 MORNING		Shipment details/Carrier: FedEx	
Where had the product sample been stored prior to sending?	<input type="checkbox"/> Store	How had the product sample been stored prior to sending?	<input type="checkbox"/> wrapped up
	Place of storage: WAREHOUSE		Packing material: AI + PE
Laboratory receiving details (date, condition of package and sample, assigned lab no.):			
Receptionist, Eurofins Product Testing A/S: <i>Pia WELANDER 30/5-18</i>		Signature of receptionist: <i>Pia WELANDER</i>	

The results are only valid for the tested sample(s).

This report may only be copied or reprinted in its entity, parts of it only with a written acceptance by Eurofins.



## 7.3 How to Understand the Results

### 7.3.1 Acronyms Used in the Report

- < Means less than
- > Means bigger than
- \* Not a part of our accreditation
- ⌘ Please see section regarding uncertainty in the Appendices.
- § Deviation from method. Please see deviation section
- a The method is not optimal for very volatile compounds. For these substances smaller results and a higher measurement uncertainty cannot be ruled out.
- b The component originates from the wooden panels and is thus removed.
- c The results have been corrected by the emission from wooden panels.
- d Very polar organic compounds are not suitable for reliable quantification using tenax TA adsorbent and HP-5 GC column. A high degree of uncertainty must be expected.
- e The component may be overestimated due to contribution from the system  
SER Specific Emission Rate.

### 7.3.2 Explanation of ID Category

#### Categories of Identity:

- 1: Identified and specifically calibrated
- 2: Identified by comparison with a mass spectrum obtained from library and supported by other information. Calibrated as toluene equivalent.
- 3: Identified by comparison with a mass spectrum obtained from a library. Calibrated as toluene equivalent.
- 4: Not identified, calibrated as toluene equivalent.

## 7.4 Description of VOC Emission Test

### 7.4.1 Test Chamber

The test chamber is made of stainless steel. A multi-step air clean-up is performed before loading the chamber, and a blank check of the empty chamber is performed.

The chamber operation parameters are as described in the test method section. (EN 16516, ISO 16000-9, internal method no.: 71M549811).

### 7.4.2 Expression of the Test Results

All test results are calculated as specific emission rate, and as extrapolated air concentration in the European Reference Room (EN 16516, AgBB, EMICODE, M1 and Indoor Air Comfort).

### 7.4.3 Testing of Carcinogenic VOCs

The emission of carcinogens (EU Categories C1A and C1B, as per European law) is tested by drawing sample air from the test chamber outlet through Tenax TA tubes after the specified duration of storage in the ventilated test chamber. Analysis is performed by ATD-GC/MS (automated thermal desorption coupled with gas chromatography and mass spectroscopy using 30 m HP-5 (slightly polar) column with 0.25 mm ID and 0.25  $\mu$ m film, Agilent) (EN 16516, ISO 16000-6, internal methods no.: 71M549812 / 71M542808B).

All identified carcinogenic VOCs are listed; if a carcinogenic VOC is not listed then it has not been detected. Quantification is performed using the TIC signal and authentic response factors, or the relative response factors relative to toluene for the individual compounds.

This test only covers substances that can be adsorbed on Tenax TA and can be thermally desorbed. If other emissions occur, then these substances cannot be detected (or with limited reliability only).

### 7.4.4 Testing of VOC

The emissions of volatile organic compounds are tested by drawing sample air from the test chamber outlet through Tenax TA tubes after the specified duration of storage in the ventilated test chamber. Analysis is performed by ATD-GC/MS using HP-5 column (30 m, 0.25mm ID, 0.25 $\mu$ m film).

This test only covers substances which can be adsorbed on Tenax TA and can be thermally desorbed. If emissions of substances outside these specifications occur then these substances cannot be detected (or with limited reliability only).

### 7.4.5 Testing of Aldehydes

The presence of aldehydes is tested by drawing air samples from the test chamber outlet through DNPH-coated silicagel tubes after the specified duration of storage in the ventilated test chamber. Analysis is performed by solvent desorption and subsequently by HPLC and UV-/diode array detection.

The absence of formaldehyde and other aldehydes is stated if UV detector response at the specific wavelength is lacking at the specific retention time in the chromatogram. Otherwise it is checked whether the reporting limit is exceeded. In this case the identity is finally checked by comparing full scan sample UV spectra with full scan standard UV spectra.

## 7.5 Quality Assurance

Before loading the test chamber, a blank check of the empty chamber is performed and compliance with background concentrations in accordance with EN 16516 / ISO 16000-9 is determined.

Air sampling at the chamber outlet and subsequent analysis is performed in duplicate. Relative humidity, temperature and air change rate in the chambers is logged every 5 minutes and checked daily. A double determination is performed on random samples at a regular interval and results are registered in a control

The results are only valid for the tested sample(s).

This report may only be copied or reprinted in its entirety, parts of it only with a written acceptance by Eurofins.

chart to ensure the uncertainty and reproducibility of the method.

The stability of the analytical system is checked by a general function test of device and column, and by use of control charts for monitoring the response of individual substances prior to each analytical sequence.

## 7.6 Accreditation

The testing methods described above are accredited on line with EN ISO/IEC 17025 by DANAK (no. 522). This accreditation is valid worldwide due to mutual approvals of the national accreditation bodies (ILAC/IAF, see also [www.eurofins.com/galten.aspx#accreditation](http://www.eurofins.com/galten.aspx#accreditation)).

Not all parameters are covered by this accreditation. The accreditation does not cover parameters marked with an asterisk (\*), however analysis of these parameters is conducted at the same level of quality as for the accredited parameters.

## 7.7 Uncertainty of the Test Method

The relative standard deviation of the overall analysis is 22%. The expanded uncertainty  $U_m$  equals 2 x RSD. For further information please visit [www.eurofins.dk/uncertainty](http://www.eurofins.dk/uncertainty).